

Reference Points

The Essential Guide to Reference Points for Driving Instructors



Milan Mehta & David Butler

BusinessCard_2022-02-13_231037



2 of 64

The Essential Guide to Reference Points for Driving Instructors

© Copyright 2020 Milan Mehta and David Butler. All rights reserved.

First Edition DITA © Copyright 2016

Second Edition DITA © Copyright 2017

First Published 2016

No Part of this book may be reproduced, stored in or introduced into a retrieval system, or transmitted, in any form, or by any means (electronic, mechanical, photocopying, recording or otherwise) without the prior written permission of the authors. Any person who does any unauthorised act in relation to this publication may be liable to criminal prosecution and civil claims for damages.

This book is sold subject to the condition that it shall not, by way of trade or otherwise, be lent, re-sold, hired out, or otherwise circulated without the author's prior consent in any form of binding or cover other than that in which it is produced and without a similar condition including this condition being imposed on the subsequent purchaser.

Published by DITA (Driving Instructor Teaching Aids)

For information about multiple purchases, please contact: email@DITA.org.uk

ISBN: 978-0-9566482-5-9

Driving Instructor Teaching Aids
Used by PDIs, ADIs, ORDIT Instructor Trainers & Examiners
Recommended across the UK

Core Comps



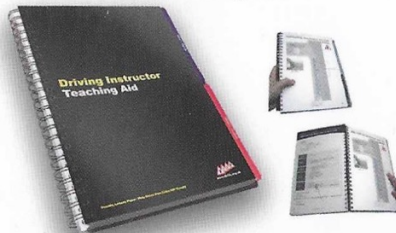
Guide to core competencies includes 157 pages of pupil fault tables. Use it for ADI Part 3, working as a Driving Instructor and the Instructor Check Test.

Essential Guide To The ADI Part 3 Test



The test broken down using the ADI Part 3 marking sheet and the DVSA standards. Clear explanation of what's required in order to receive a high grade across the new, client centred, graded competency framework, introduced by the DVSA.

Driving Instructor Teaching Aid



Designed for Part 3 Training/Test & ADIs teaching real learners. A4 colour visuals, key point lesson help notes. Laid out in the order pupils naturally progress. Sturdy pages, tough cover.

Reference Points



Reference points from both seats & tips on how to teach them. Can be used by ADIs & trainees - perfect for teaching and learning strategies



Contents

Quick Guide		1	Parallel Park			Bay Park (Forward)		
Parked	<i>Instructor</i>	2	Clearance	<i>Instructor</i>	20	Left	<i>Instructor</i>	38
	<i>Driver</i>	3	Start Position	<i>Driver</i>	21		<i>Driver</i>	39
Normal Road Position			Start of Turn	<i>Instructor</i>	22	Right	<i>Instructor</i>	40
	<i>Instructor</i>	4		<i>Driver</i>	23		<i>Driver</i>	41
	<i>Driver</i>	5	Point of Steering Right	<i>Instructor</i>	24	Turn in the Road		
Clearance				<i>Driver</i>	25	Outrun	<i>Instructor</i>	42
	<i>Instructor</i>	6	Finish	<i>Driver</i>	27		<i>Driver</i>	43
	<i>Driver</i>	7	Bay Park (Reverse)	<i>Instructor</i>	28	Reverse	<i>Instructor</i>	44
Left turn	<i>Instructor</i>	8	(Left) Start Position	<i>Driver</i>	29		<i>Driver</i>	45
	<i>Driver</i>	9				Left Reverse		
Right Turn	<i>Instructor</i>	10	Finish	<i>Instructor</i>	30	Start Position	<i>Instructor</i>	46
	<i>Driver</i>	11		<i>Driver</i>	31		<i>Driver</i>	47
Emerging Left	<i>Instructor</i>	12	(Right) Start Position	<i>Instructor</i>	32	Point of Turn	<i>Instructor</i>	48
	<i>Driver</i>	13		<i>Driver</i>	33		<i>Driver</i>	49
Emerging Right	<i>Instructor</i>	14	Finish	<i>Instructor</i>	34	End of Turn	<i>Instructor</i>	50
	<i>Driver</i>	15		<i>Driver</i>	35		<i>Driver</i>	51
Pull up on the Right & Reverse				<i>Instructor</i>	36	Right Reverse		
Approach/Start Position	<i>Instructor</i>	16		<i>Driver</i>	37	Start Position	<i>Instructor</i>	52
	<i>Driver</i>	17					<i>Driver</i>	53
Reversing	<i>Instructor</i>	18				Point of Turn	<i>Instructor</i>	54
	<i>Driver</i>	19					<i>Driver</i>	55
						End of Turn	<i>Instructor</i>	56
							<i>Driver</i>	57





Reference points are an important part of a driving instructor's 'toolbox' - they help pupils judge how to:

Position their vehicle

Keep a safe distance from obstructions

Turn accurately at junctions

It's **vital** to explain that reference points are **visual** not **actual** e.g. if we want a pupil to stop the vehicle at a T-junction, we should tell them to look for the Give Way or Stop Line appearing **visually** near their door mirror, this ensures that they don't physically try to line up the door mirror with the lines.

It's also **critical** that the pupil is taught **why** they are using the reference point. This seems obvious but is often missed. As an example, during a left reverse lesson we often hear something like:

"look for the kerb cutting through the corner of the side window"

This statement only teaches the pupil to follow instructions, not what the reference point is helping them to judge. Therefore the pupil should be told:

"before we begin to turn, the rear wheels should be lined up with the start of the corner - a good reference for this is when the kerb appears in the corner of the side window"

There are many different vehicles, so it's important that you 'tailor' each reference point to the learner, **not the vehicle**. Therefore, you **must** allow for differences in:

Driver height

Seating position

To ensure accuracy a Driving Instructor must have a good knowledge of reference points from **both** seats. For that reason this manual provides reference guides from both driver's seat **and** instructor's seat, along with information and tips to teach pupils.

Parked

Instructor's view

Reference Points



Position: can be up to a tyre's width from the kerb (approx 6")



Cross reference the
left door mirror



Check where the kerb meets the dashboard

Parked

Driver's view

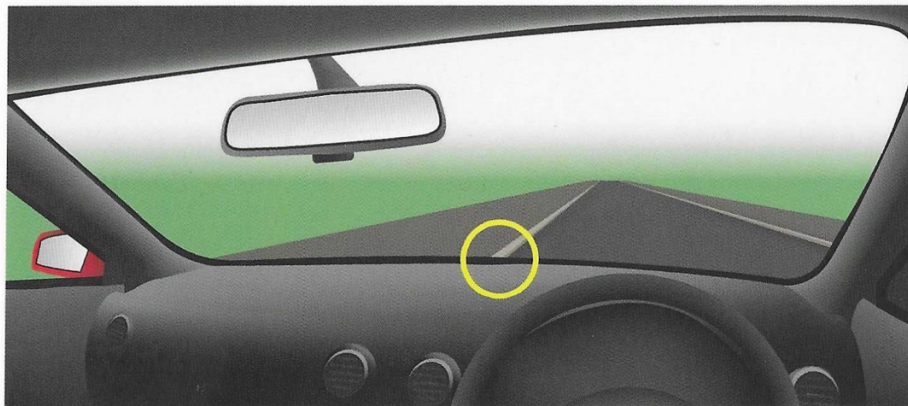
Reference Points



Top View



Cross reference
the left door mirror



Check where the kerb meets the dashboard

Normal Road Position

Instructor's view

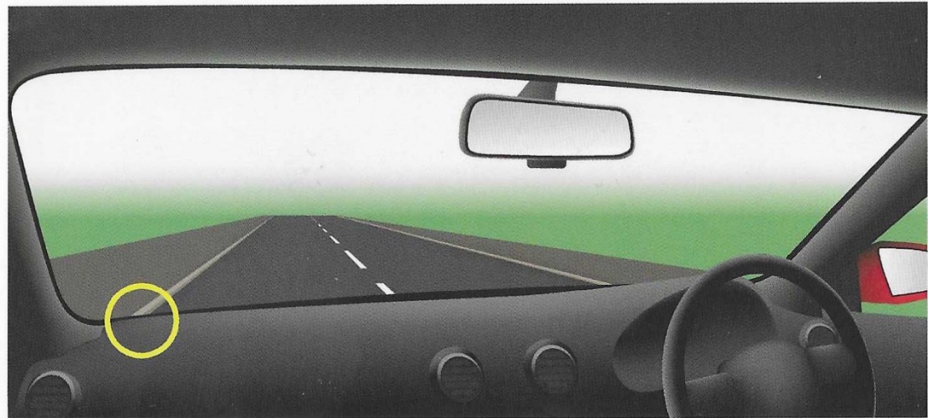
Reference Points



Normal Road Position: about 1 metre from the kerb (depends on the width of the road) or the centre of a lane e.g. dual carriageway



Cross reference the left door mirror



Check where the kerb meets the dashboard



Don't use wipers for a reference point; it might rain!

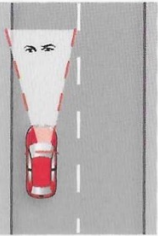
Normal Road Position

Driver's view

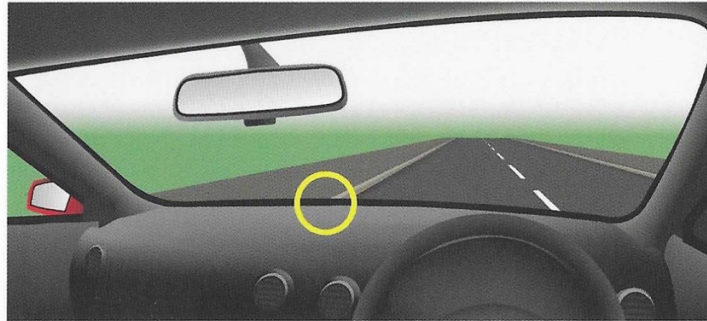
Reference Points



Top View



Cross
reference
left door
mirror



Wide Roads
Check kerb
along the
dashboard

Top View



Check for
equal gaps
in **both** door
mirrors



Lanes
Check lines
along the
dashboard &
near steering
wheel



Clearance

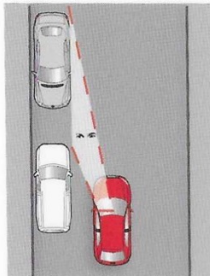
Instructor's view

Reference Points



Clearance: Approximately 1 metre from parked vehicles

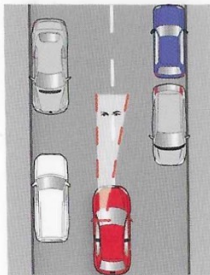
Top View



Check the
bottom of the
tyres along
the dashboard



Top View



Check for the
centre of the
road along the
dashboard



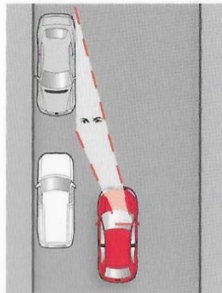
Clearance

Driver's view

Reference Points

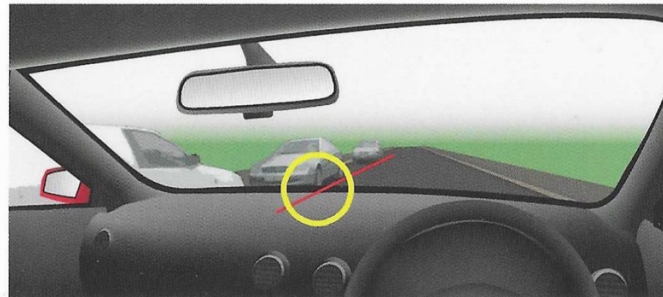


Top View

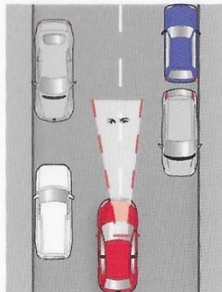


Check the bottom of the tyres along the dashboard

Parked vehicles on the left



Top View



Check for the centre of the road along the dashboard / steering wheel

Parked vehicles on both sides / narrow road



Left Turn

Instructor's view

Reference Points



Start turning when front wheels reach the beginning of the corner



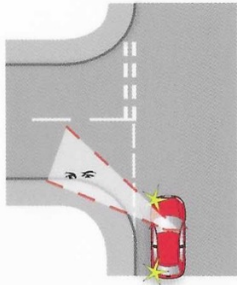
Left Turn

Driver's view

Reference Points



Top View



Point of Turn: check corner getting close to windscreen pillar

Note: **sharp** corners can be obscured behind the windscreen pillar

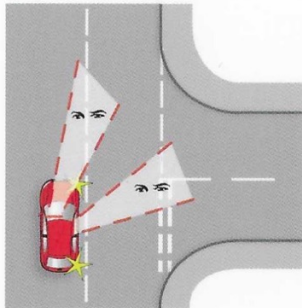
Right Turn

Instructor's view



Position: As close to the centre line as is safe

Top View

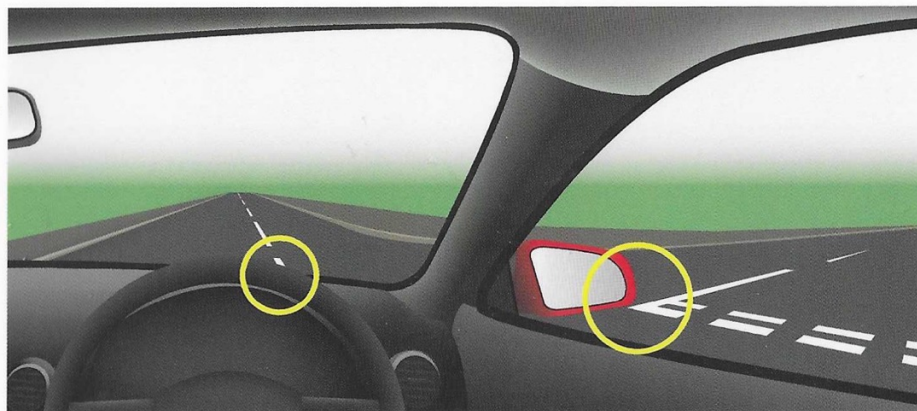


Check centre lines for left of centre and wait / turn position.
Wait / turn when front of the vehicle reaches centre line of the side road.

Right Turn

Driver's view

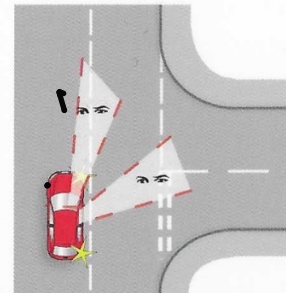
Reference Points



Left of centre: check centre line along dashboard

Wait / turn position: check mirror visually against centre of the side road

Top View



Left of centre:
Cross reference
the right door mirror

Emerging Left

Instructor's view



Position: About 1 metre from the kerb



Road Position:
Cross reference the
left door mirror



Follow the shape of the kerb and position the vehicle to the left

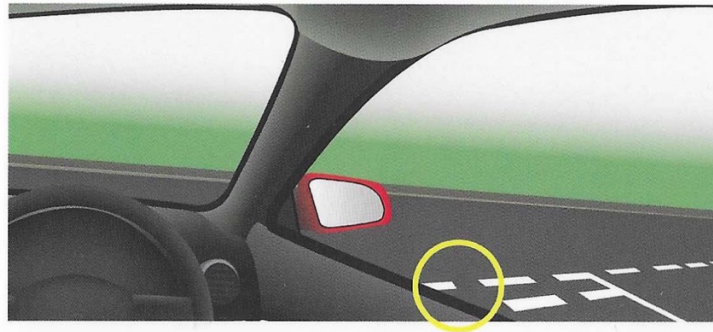
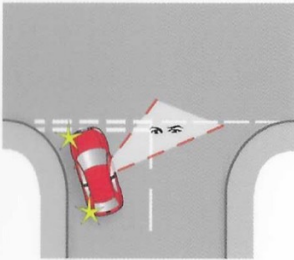
Emerging Left

Driver's view

Reference Points

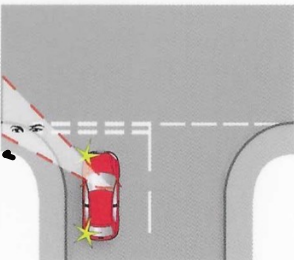


Top View



Wait position:
check Give
Way line along
driver's door

Top View



Point of Turn:
check corner
getting close
to windscreen
pillar

Note: *sharp* corners can be obscured
behind windscreen pillar

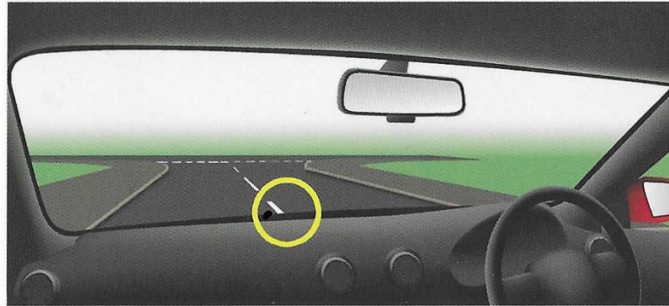
Emerging Right

Instructor's view



Position: Straight and wait just behind the give way line

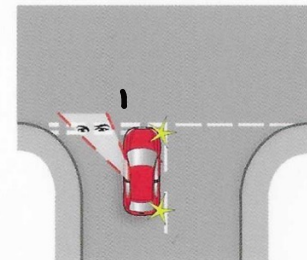
Approach:
left of centre,
check centre
of road along
dashboard



Wait position:
check Give
Way line along
passenger
door



Top View



Emerging Right

Driver's view

Reference Points

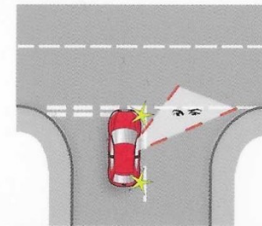


- ① **Approach:**
position just
left of centre
line



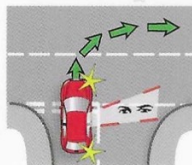
Left of centre:
cross reference centre
line in door mirror

- ② **Wait
position:**
check door
mirror visually
against Give
Way line

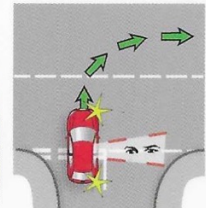


Top
View

- ③ **Emerging
point of turn**
narrow road:
Give Way line
under **feet**



**Emerging
point of turn**
wide road:
Give way line
under **seat**



Pull up on the Right and Reverse - Start Position

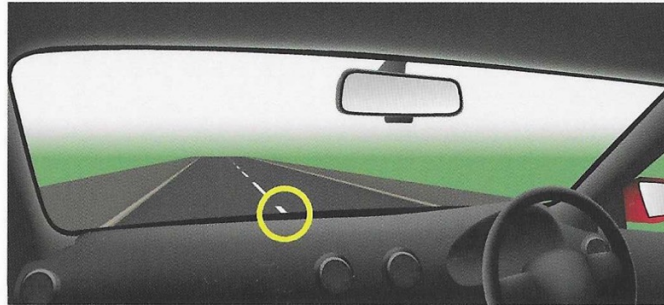
Instructor's view

Reference Points

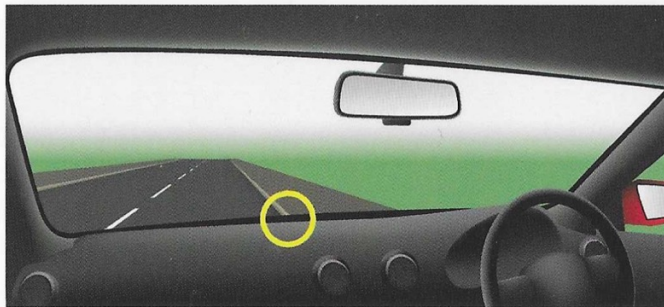


Position: Parallel to the kerb, about a drain's width away

Approach:
check centre
of road along
dashboard



Start Position:
check kerb
along
dashboard



Top View



Pull up on the Right and Reverse - Start Position

Reference Points

Driver's view



Approach left of centre:
check centre line along dashboard



Cross reference with the door mirror

Top View

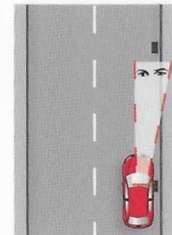


Start position:
Check where kerb meets the dashboard



Cross reference with the door mirror

Top View



Pull up on the Right and Reverse - Reversing

Instructor's view

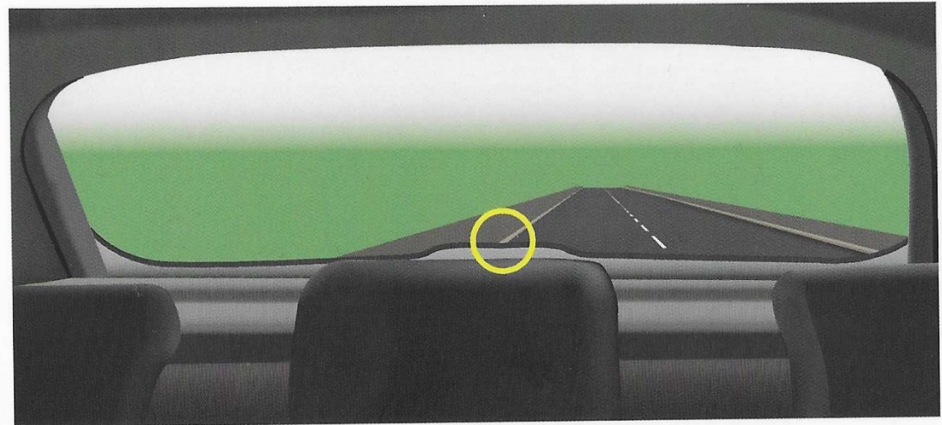
Reference Points



Position: Parallel to the kerb, about a drain's width away



Cross reference kerb
in the door mirror



Look for the kerb near the centre of the rear window

Pull up on the Right and Reverse - Reversing

Driver's view

Reference Points



Check kerb on left side of the rear window

Top View



Cross reference kerb
in the door mirror

Parallel Park - Clearance

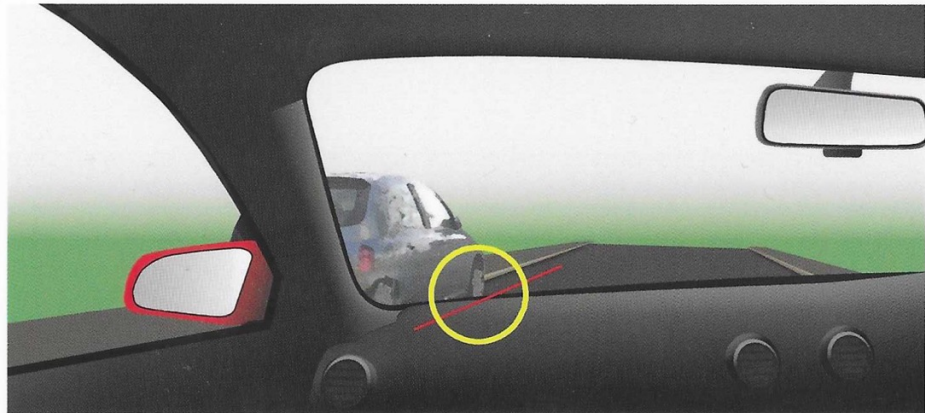
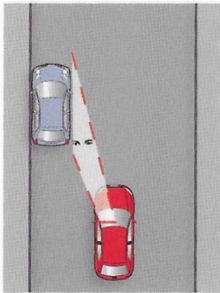
Instructor's view

Reference Points



Position: Reasonably close - about ½ metre away

Top View



Check the bottom of the tyres along the dashboard



Staying reasonably close helps the manoeuvre if the road is narrow or parked vehicles are on the opposite side

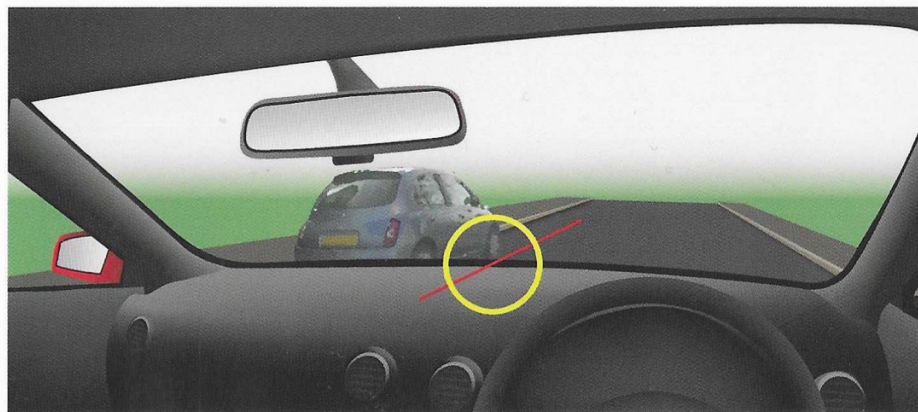
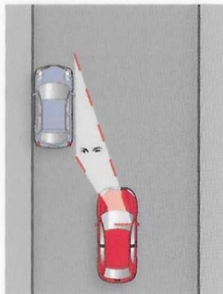
Parallel Park - Clearance

Driver's view

Reference Points



Top View



Check the bottom of the tyres along the dashboard

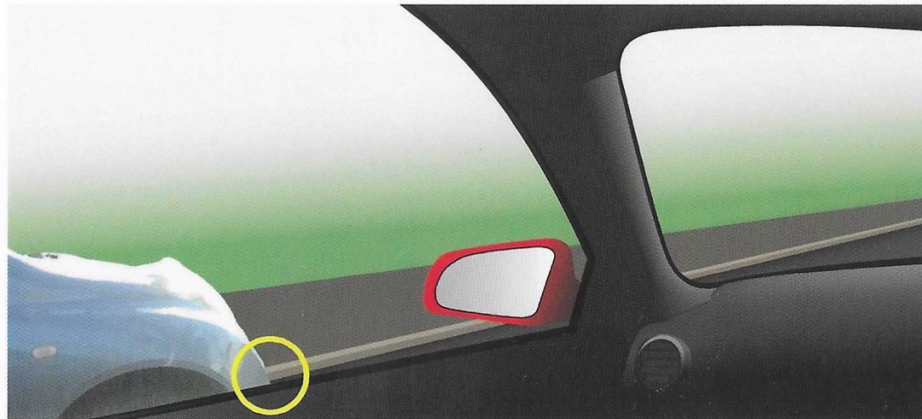
Parallel Park - Start Position

Instructor's view

Reference Points



Position: Slightly ahead of the object vehicle



Slightly ahead so the driver can reverse back and turn when the vehicles line up at the rear

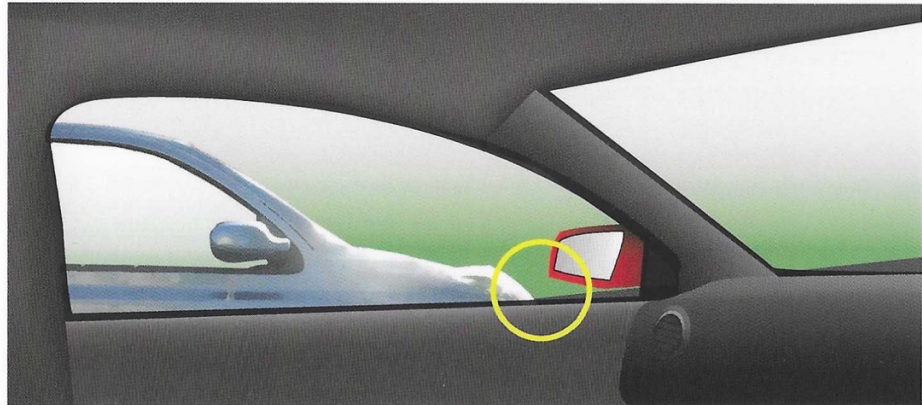
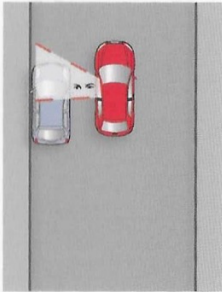
Parallel Park - Start Position

Driver's view

Reference Points



Top View



Line up slightly ahead of object vehicle

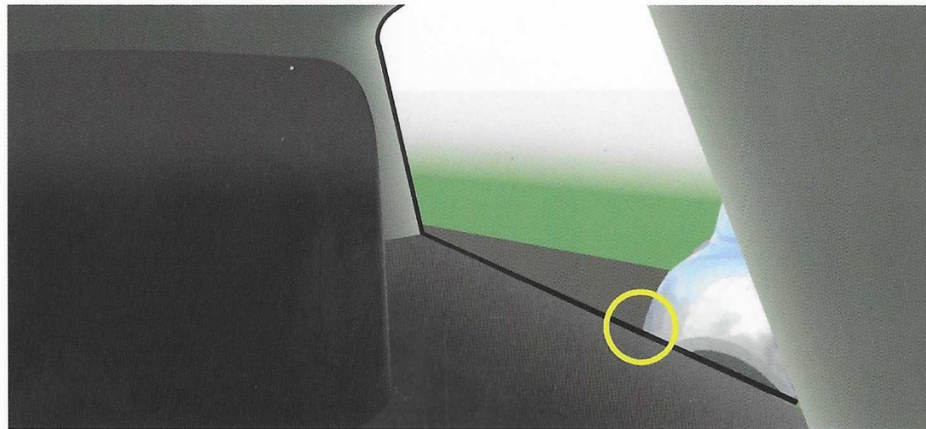
Parallel Park - Start of Turn

Instructor's view

Reference Points



Position: Reverse back until both vehicles line up at the back



Check back of object vehicle along rear passenger window

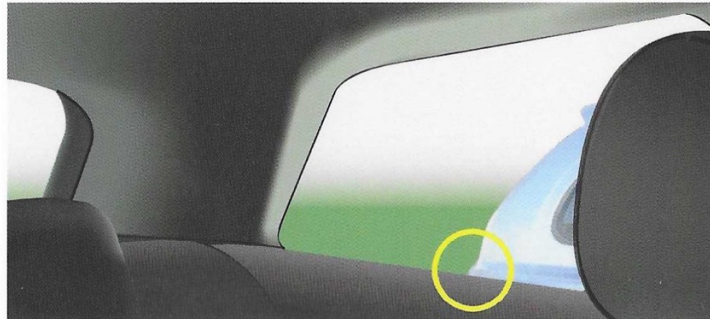
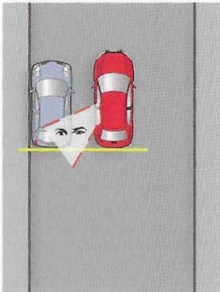
Parallel Park - Start of Turn

Driver's view

Reference Points



Top View



Line up the back of your car with back of object vehicle - check along rear passenger window

Top View



If the object car is facing forwards - line up your door mirror with its seatbelt

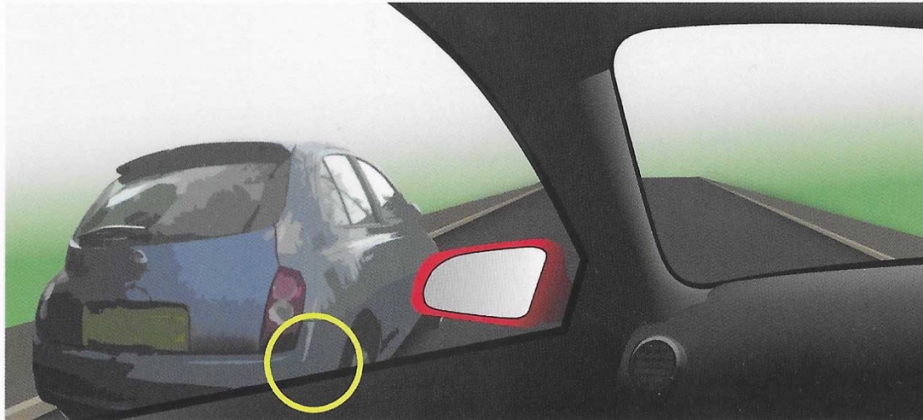
Parallel Park - Point of Steering Right

Instructor's view

Reference Points



Position: Reverse back until the rear wheel is about ½ metre from the kerb



Check corner of object vehicle along passenger door

Parallel Park - Point of Steering Right

Driver's view

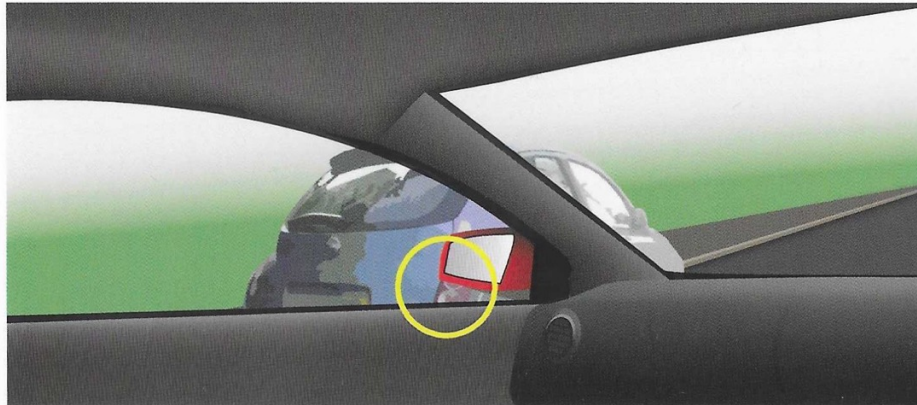
Reference Points



Top View



Cross reference kerb
in the door mirror



Check that corner of object vehicle is near door mirror

Parallel Park - Finish

Instructor's view

Reference Points



Parked position: can be up to a tyre's width from the kerb (approx 6")



Cross reference the left door mirror



Check where the kerb meets the dashboard

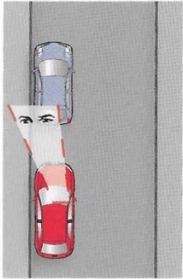
Parallel Park - Finish

Driver's view

Reference Points



Top View



Cross reference
the left door mirror



Check where the kerb meets the dashboard

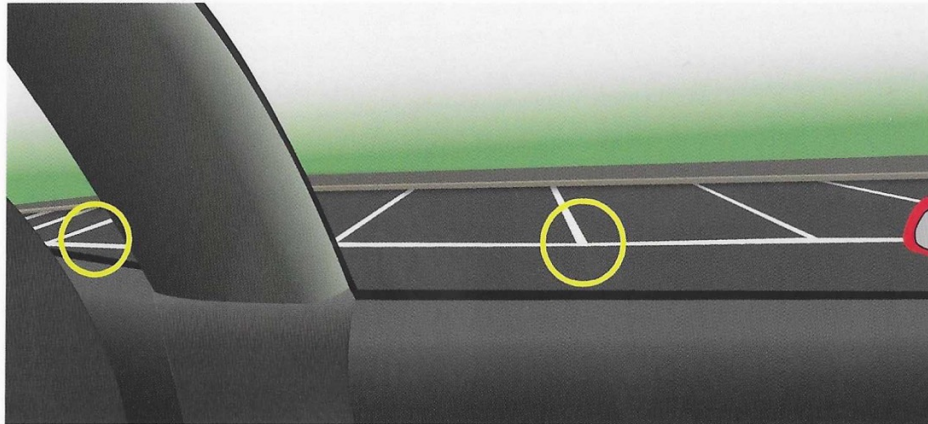
Bay Park Left (reverse) - Start Position

Instructor's view

Reference Points



Position: Parallel to the bays, about a car's width away



Check starting point reference and target bay

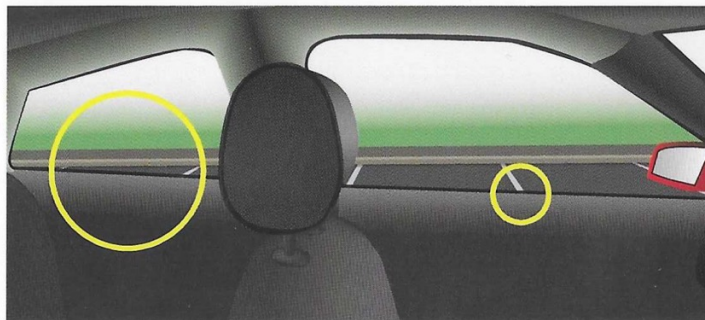
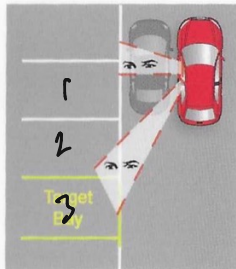
Bay Park Left (reverse) - Start Position & Turn

Driver's view

Reference Points



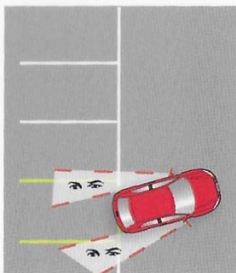
Top View



Start Position

Line up reference points along passenger door and rear side window

Top View



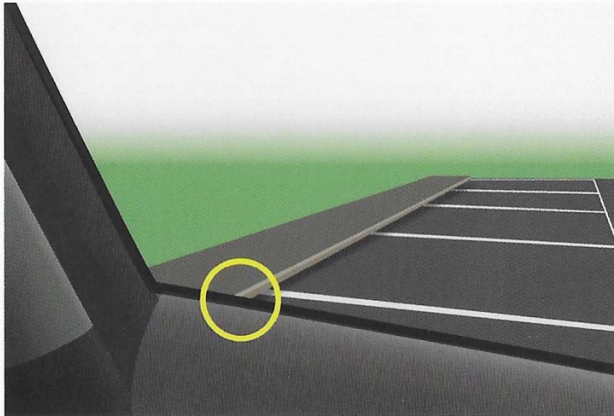
Turn

Check target bay lines in both mirrors

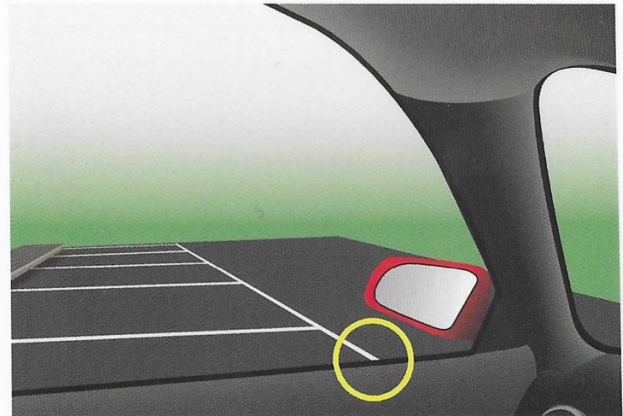
Bay Park Left (reverse) - Finish

Instructor's view

Reference Points



Check back of bay along door

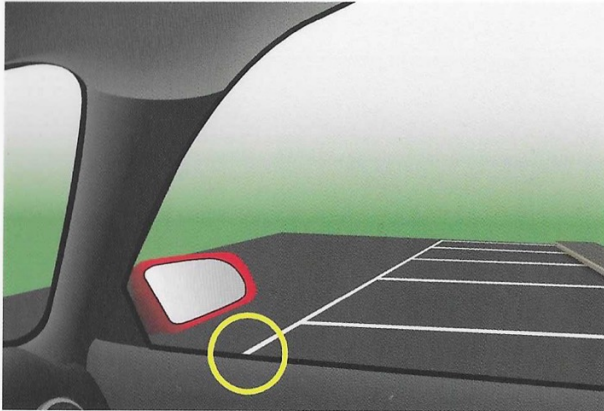


Check front of bay near door mirror

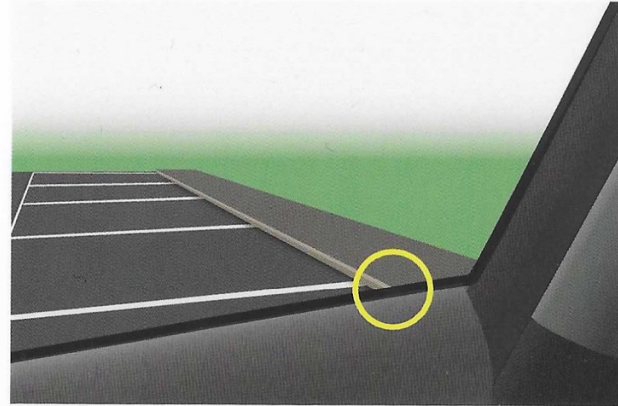
Bay Park Left (reverse) - Finish

Driver's view

Reference Points



Check front of bay near door mirror



Check back of bay along driver's door

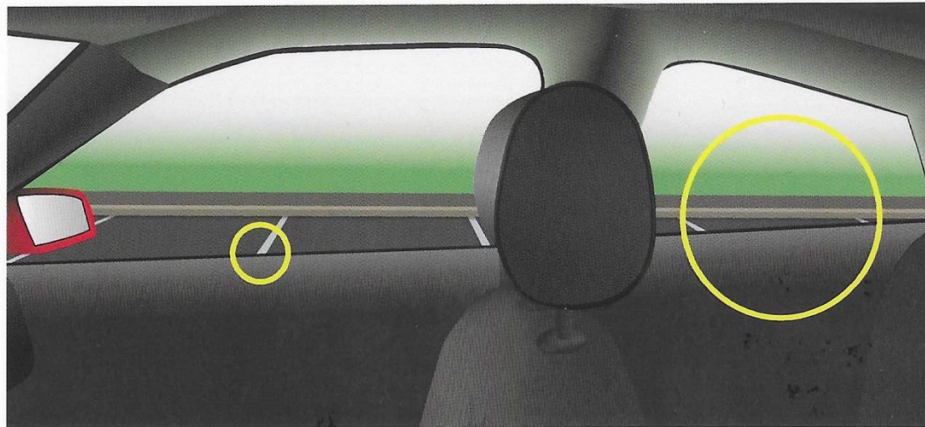
Bay Park Right (reverse) - Start Position

Instructor's view

Reference Points



Position: Parallel to the bays, about a car's width away



Check starting point reference and target bay

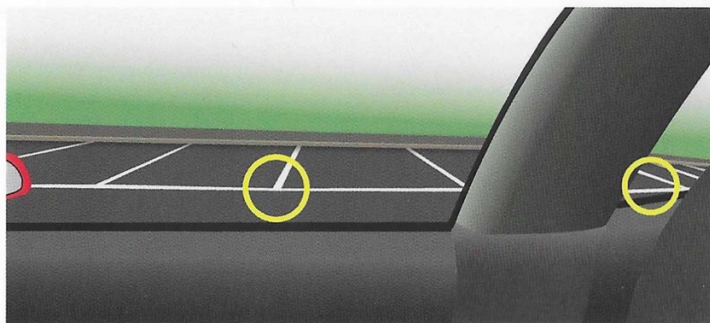
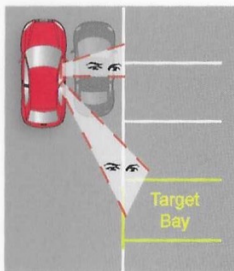
Bay Park Right (reverse) - Start Position & Turn

Driver's view

Reference Points



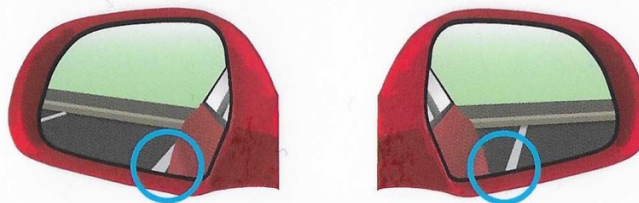
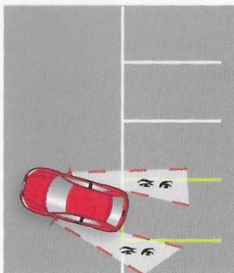
Top View



Start Position

Line up reference points along passenger door and rear side window

Top View



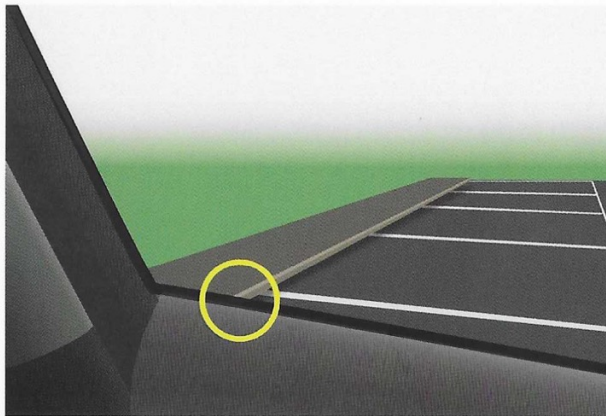
Turn

Check target bay lines in both mirrors

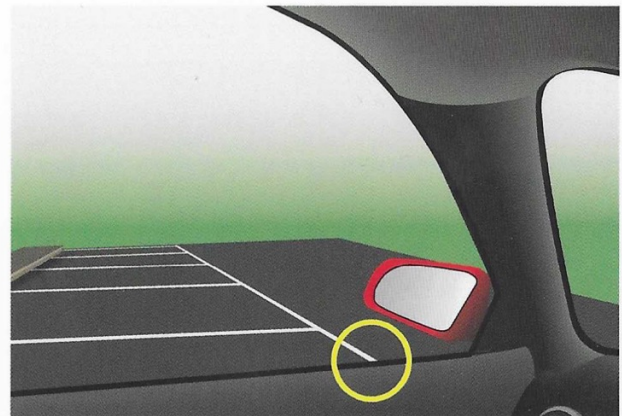
Bay Park Right (reverse) - Finish

Instructor's view

Reference Points



Check back of bay along door

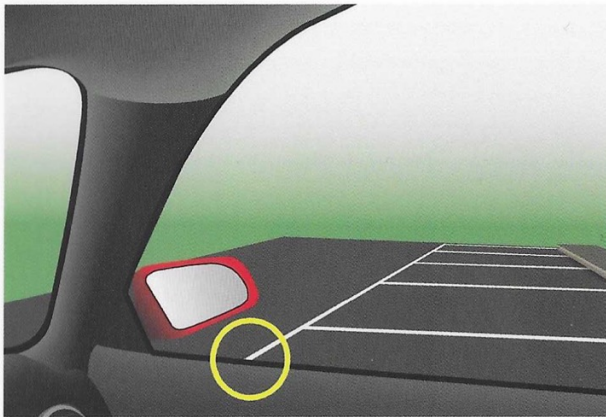


Check front of bay near door mirror

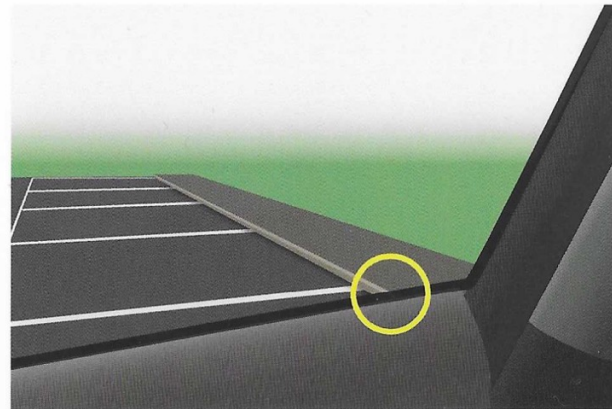
Bay Park Right (reverse) - Finish

Driver's view

Reference Points



Check front of bay near door mirror



Check back of bay along driver's door

Bay Park Left (forward)

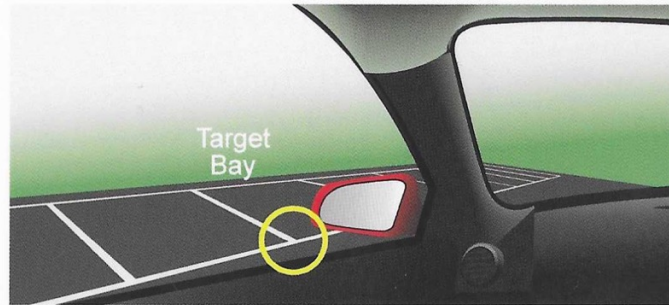
Instructor's view

Reference Points

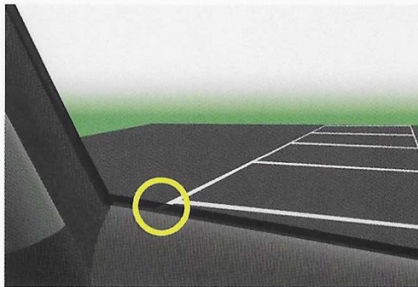


Position: Parallel to the bays, about a car's width away

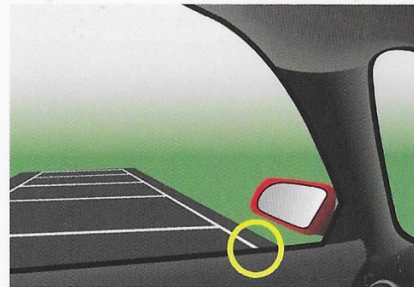
Start Position:
check parking bay
lines along the
door and near the
door mirror



Parked Position:
check front of
bay along
driver's door



Parked Position:
Check back of
bay near door
mirror



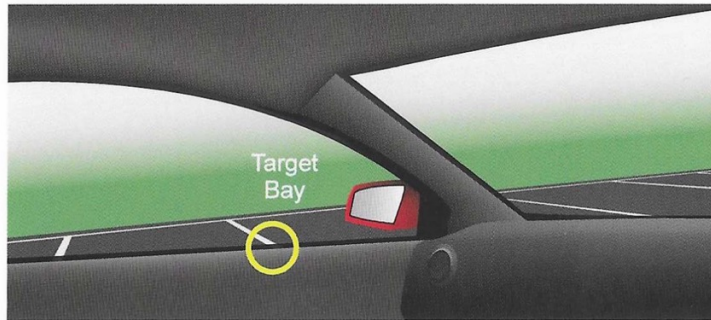
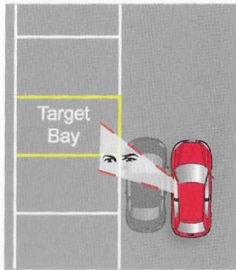
Bay Park Left (forward)

Driver's view

Reference Points

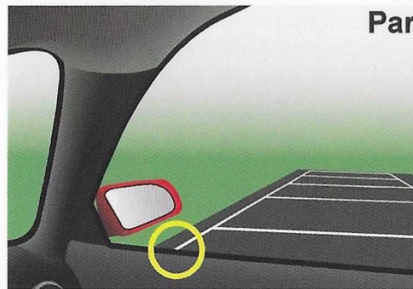
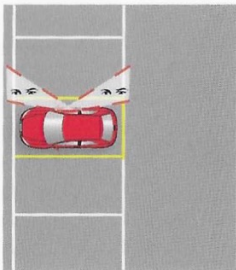


Top View



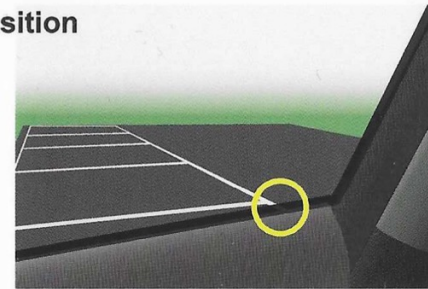
Start Position:
Check parking bay lines along passenger door

Top View



Check back of bay near door mirror

Parked Position



Check front of bay along driver's door

Bay Park Right (forward)

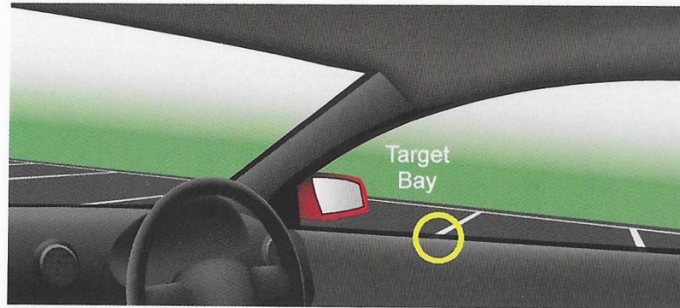
Instructor's view

Reference Points

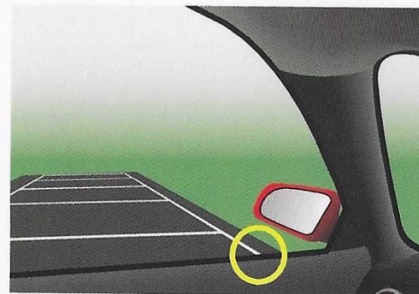
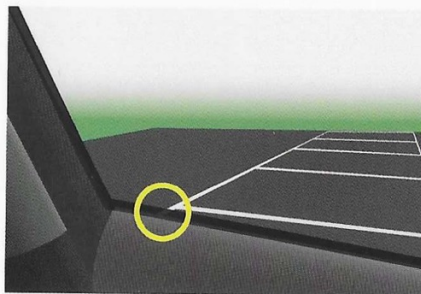


Position: Parallel to the bays, about a car's width away

Start Position:
check parking bay
lines along the
door and near the
door mirror



Parked Position:
check front of
bay along
driver's door



Parked Position:
Check back of
bay near door
mirror

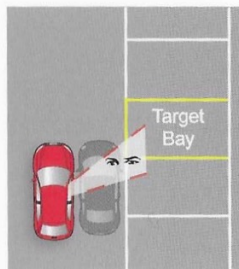
Bay Park Right (forward)

Driver's view

Reference Points

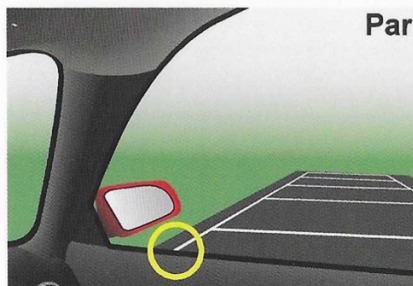
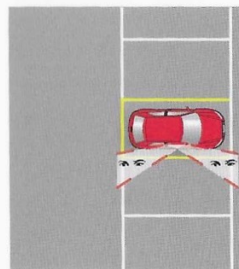


Top View



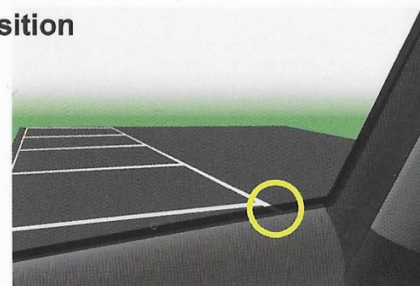
Start Position:
check parking bay lines along door and near door mirror

Top View



Check back of bay near door mirror

Parked Position



Check front of bay along driver's door

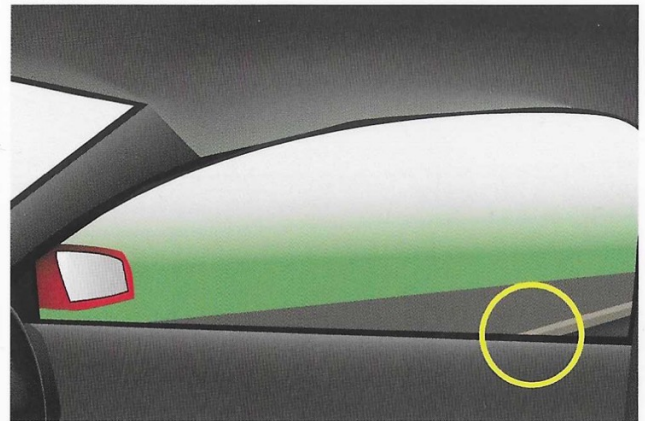
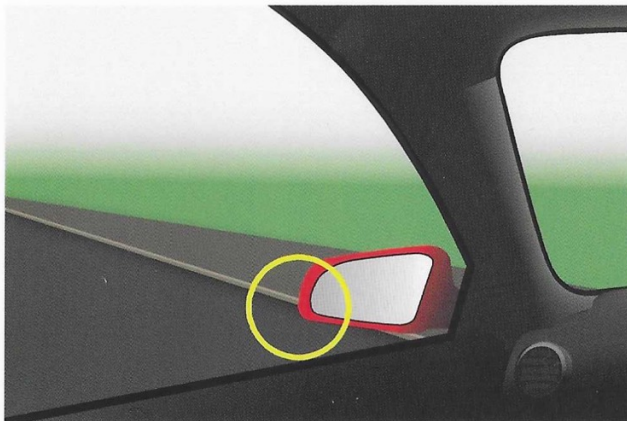
Turn in the Road - Outrun

Instructor's view

Reference Points



Position: Stop just before front of vehicle overhangs the kerb



Check the kerb through the passenger and driver door windows



Pause just before stopping to give the driver a reference point for when to steer back

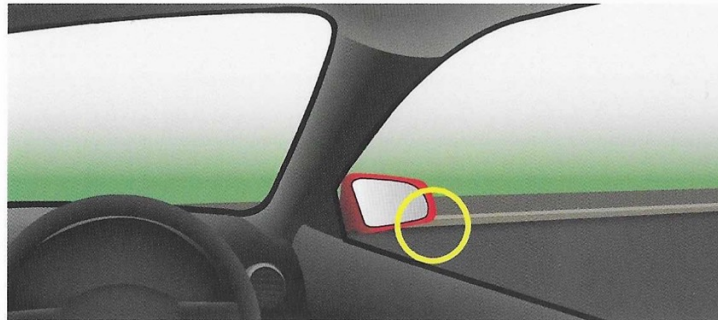
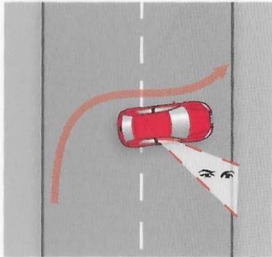
Turn in the Road - Outrun

Driver's view

Reference Points

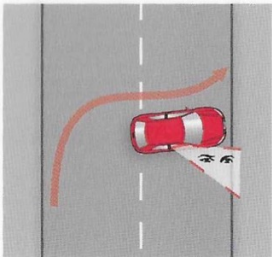


Top View



Check kerb in driver's side window to judge when to **steer back**

Top View



Check kerb along driver's door to judge when to **stop**

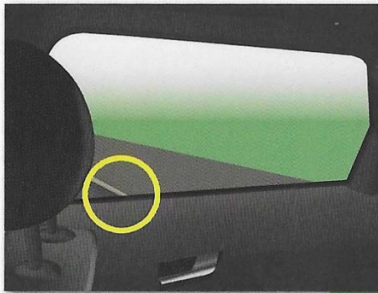
Turn in the Road - Reverse

Instructor's view

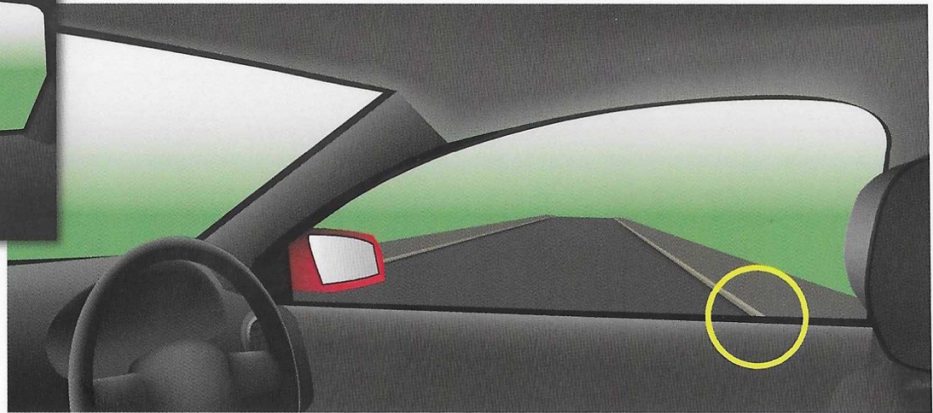
Reference Points



Position: Stop just before rear of vehicle overhangs the kerb



4 door car: check the kerb along the rear passenger door



2 door car: check the kerb along the driver's door



Pause just before stopping to give the driver a reference point for when to steer back

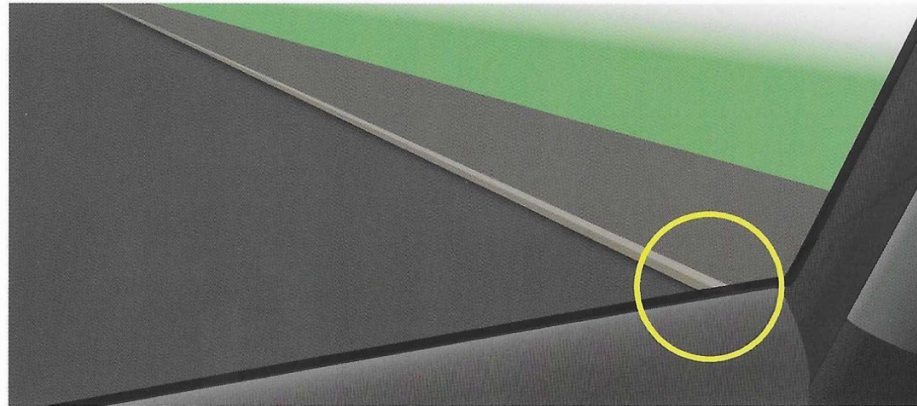
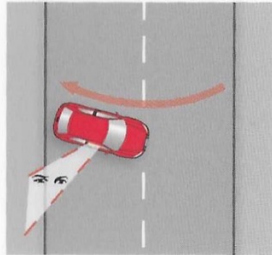
Turn in the Road - Reverse

Driver's view

Reference Points



Top View



Check kerb along the driver's door to help judge when to stop

Note: Taller drivers may be able to see the kerb through the rear side window

Left Reverse - Start Position

Instructor's view

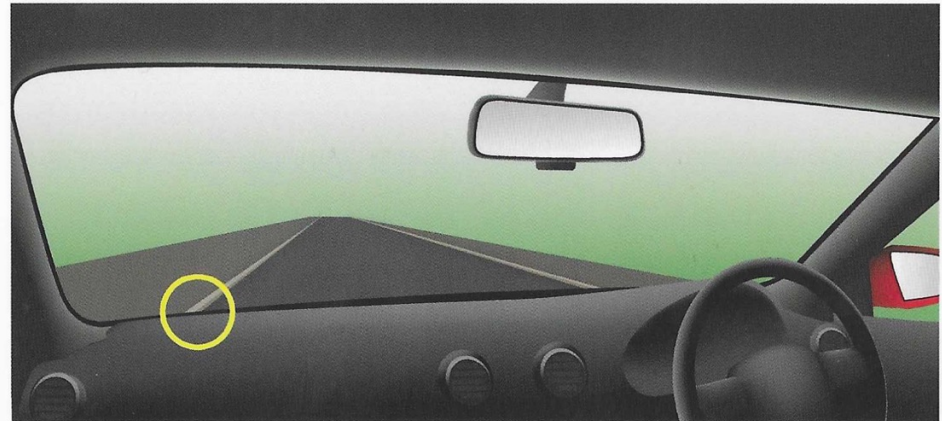
Reference Points



Position: Parallel to the kerb, about a drain's width away



Cross reference the
left door mirror



Check where the kerb meets the dashboard

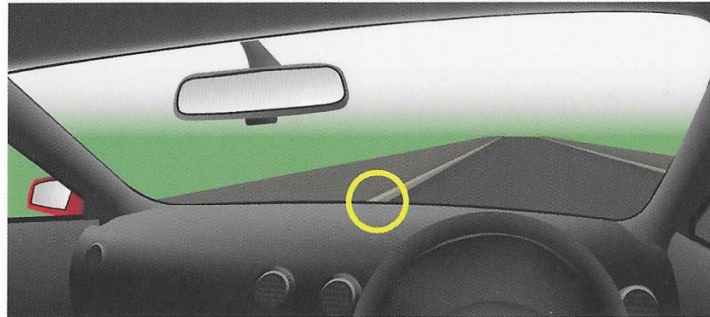
Left Reverse - Start Position

Driver's view

Reference Points

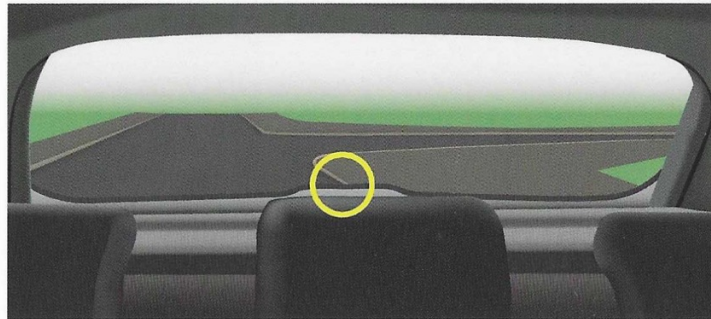
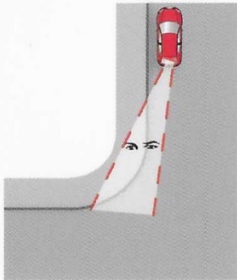


Cross reference kerb
in the door mirror



Front: Check
where the kerb
meets the
dashboard

Top View



Rear: Check
kerb is near
centre of the
rear window

Left Reverse - Point of Turn

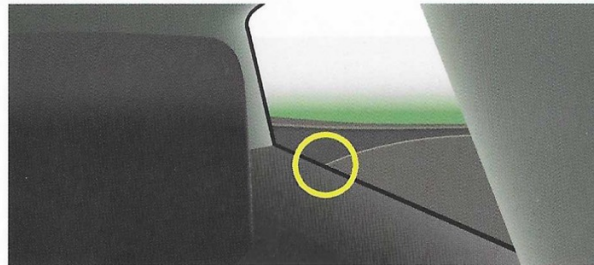
Instructor's view



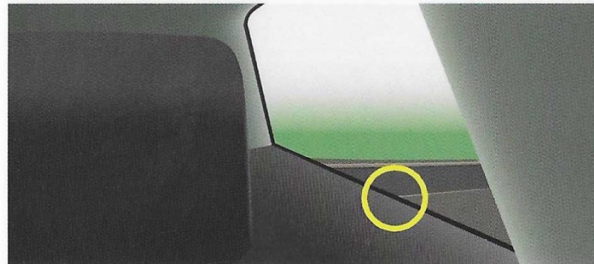
Position: Reverse back until the rear wheel reaches the start of the corner



Cross reference kerb
in the door mirror



Sweeping corner



Sharp corner

Check kerb along rear side window

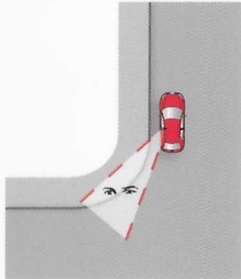
Left Reverse - Point of Turn

Driver's view

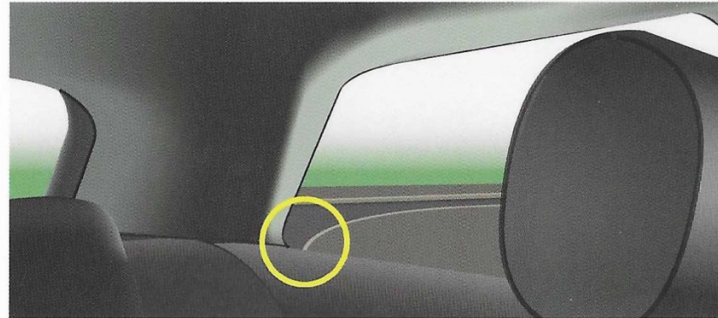
Reference Points



Top View - Sweeping



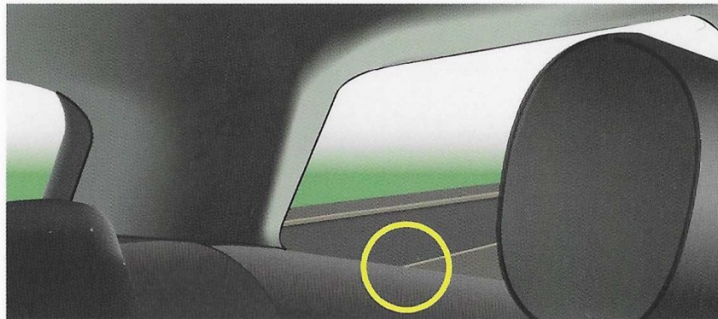
Cross reference
kerb in door mirror



Sweeping

Corner:

check kerb
near **corner** of
the rear side
window



Sharp

Corner:

check kerb
along **bottom**
of the rear
side window

Left Reverse - End of Turn

Instructor's view

Reference Points



Position: Parallel to the kerb, about a drain's width away



Cross reference the left door mirror



Check kerb at the edge of the **rear** window



Sit with your back to your door and look over your right shoulder through the back window

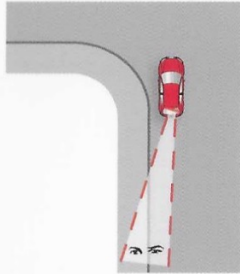
Left Reverse - End of Turn

Driver's view

Reference Points



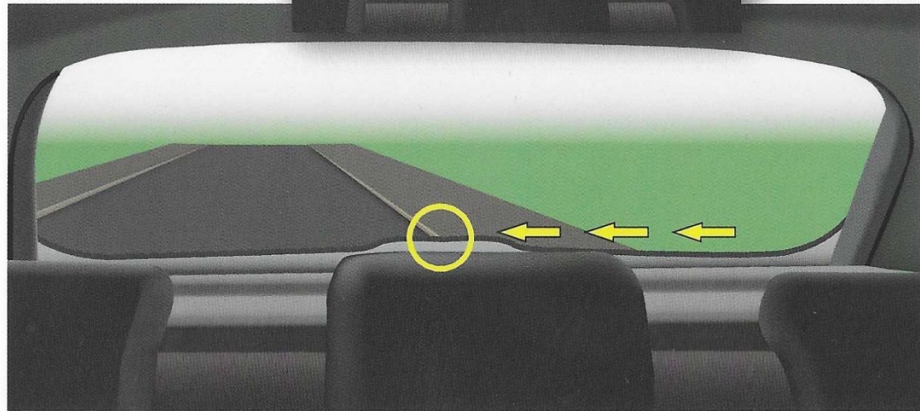
Top View



Cross reference
the left door mirror



Kerb
appears in
the corner



Watch for the kerb moving back to the centre of the rear window

Right Reverse - Start Position

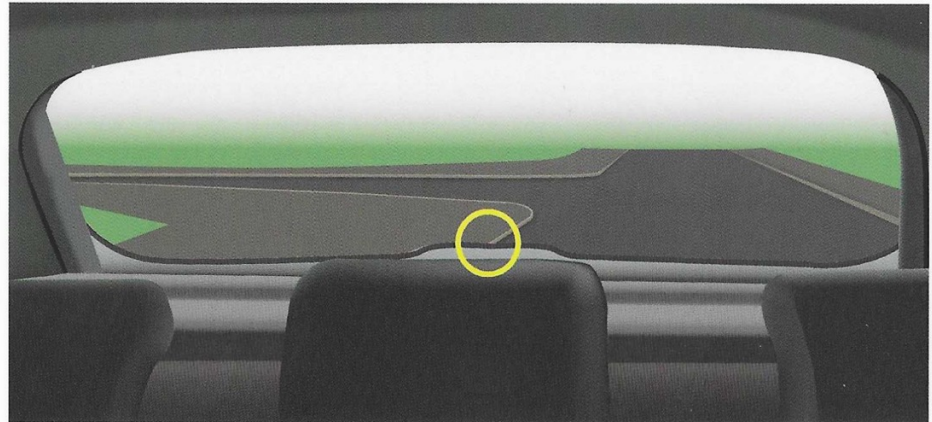
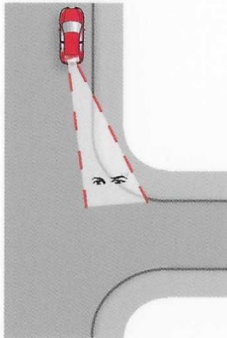
Instructor's view

Reference Points



Position: Parallel to the kerb, about a drain's width away

Top View



Check kerb is near centre of the **rear** window

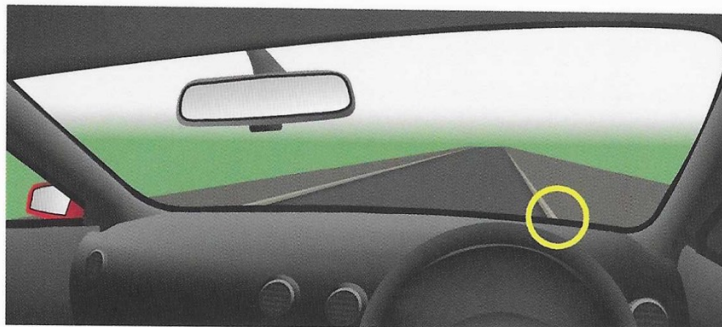
Right Reverse - Start Position

Driver's view

Reference Points



Front: Check where the kerb meets the dashboard

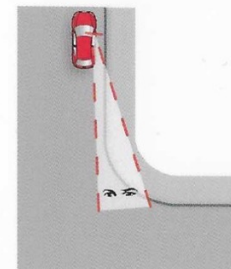


Cross reference with the door mirror

Rear: Check kerb on left side of the *rear* window



Top View



Right Reverse - Point of Turn

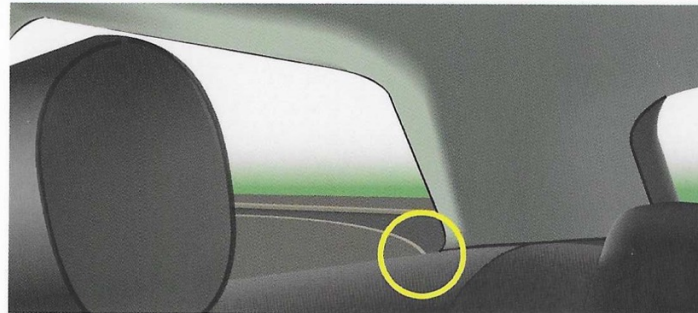
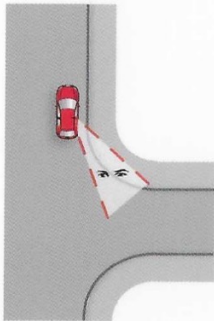
Instructor's view

Reference Points

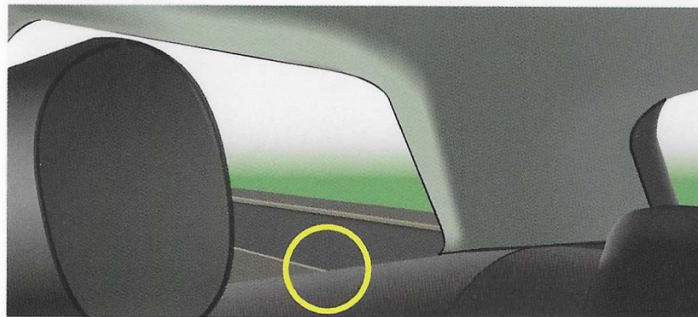


Position: When the rear wheel reaches the start of the corner

Top View



Sweeping Corner:
check kerb
near **corner**
of the rear side
window



Sharp Corner:
check kerb
along **bottom**
of the rear
side window

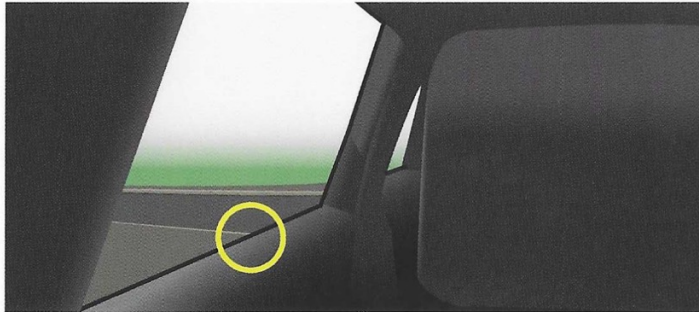
Right Reverse - Point of Turn

Driver's view

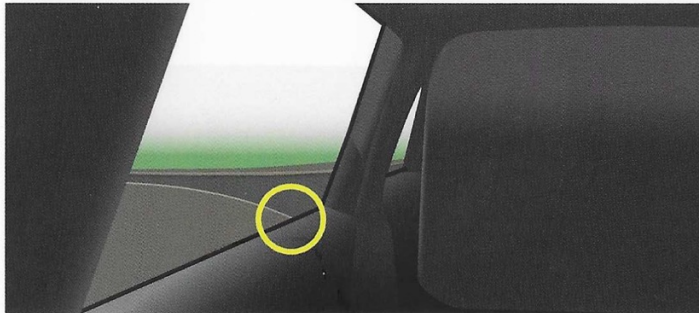
Reference Points



Sweeping corner

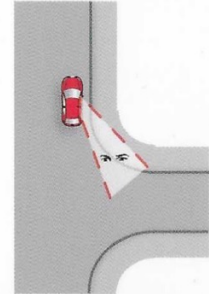


Sharp corner



Check the kerb along the *rear* passenger window

Top View



Cross reference
the door mirror

Right Reverse - End of Turn

Instructor's view

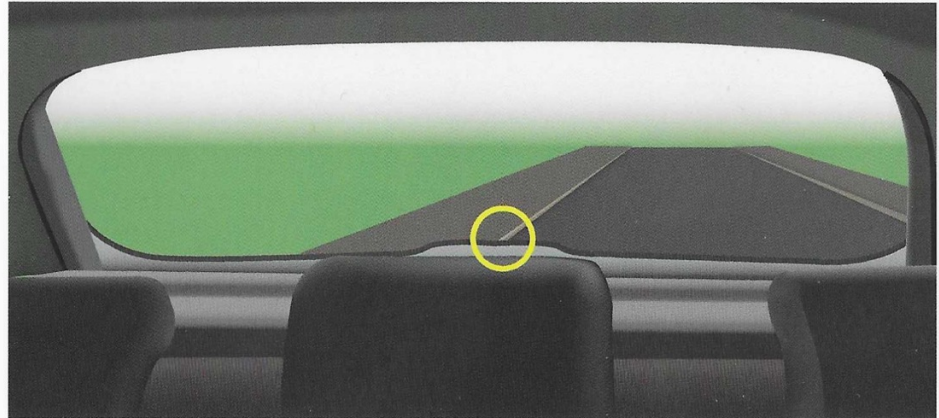
Reference Points



Position: Parallel to the kerb, about a drain's width away



Cross reference kerb
in the door mirror



Watch for the kerb moving back to the centre of the rear window

Right Reverse - End of Turn

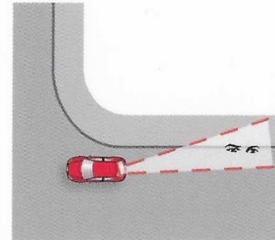
Driver's view

Reference Points



Check kerb on left side of the rear window

Top View



Cross reference kerb
in the door mirror

Reference Points

Whether a fully qualified ADI or a trainee PDI - you'll find this book invaluable! It has been designed for both driving instructors and PDIs to teach learners the reference points used for safe road positioning and manoeuvres.

With reference points shown from both seats, and tips on how to teach them, this book can be used by driving instructors to teach learners as well as trainees learning to teach - perfect for teaching and learning strategies.

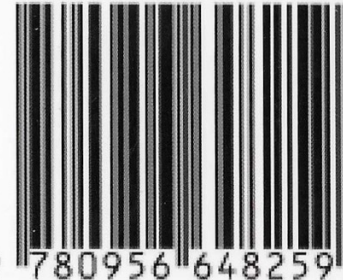
Clear and easy to understand visuals are the best way for learners to understand what reference points are; where they are located around the car and how to use them. They are also an excellent way to eliminate long and complicated explanations that can be time consuming and difficult to understand.

£24

www.DITA.org.uk

Used and recommended across
the UK driving instructor industry

ISBN 978-0-9566482-5-9



M
✓

S
✓

P S L
—
1m x 3 } 107

L
KFRB
MIRBY

Follow
KFRB ✓